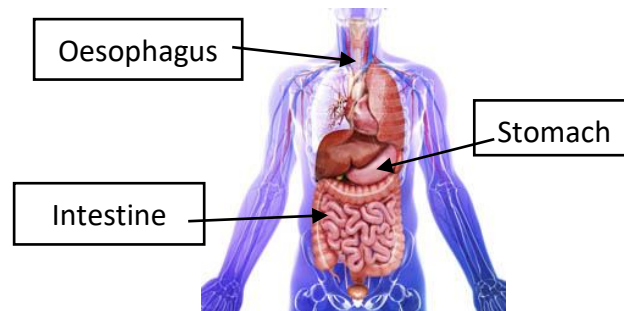


# Year 4 Science Knowledge Organiser: Animals including humans

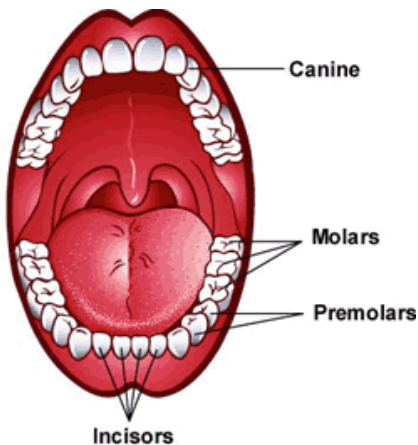
## The Digestive System

The group of organs that work together to break down and process food into parts that can be used by the body.



<b>Saliva</b>	A fluid produced in the mouth that contains enzymes that help digest food.
<b>Oesophagus</b>	The tube that carries food from the mouth to the stomach.
<b>Enzyme</b>	A chemical substance that helps reactions to occur in the body.
<b>Intestine</b>	The organs that break down food, absorb nutrients, and through which waste passes on its way out of the body.
<b>Stomach</b>	The organ in which acids and enzymes partially digest food.

## Teeth



<b>Incisors</b>	A narrow-edged tooth at the front of the mouth, adapted for cutting. In humans there are four incisors in each jaw.
<b>Canines</b>	A pointed tooth between the incisors and premolars of a mammal, often greatly enlarged in carnivores
<b>Molars</b>	A grinding tooth at the back of a mammal's mouth.

## Food Chains



## Year 4 Science Knowledge Organiser: Animals including humans

<b>Food chain</b>	A series of living things each dependent on the next as a source of food.
<b>Producer</b>	The organism that makes/produces its own food.
<b>Prey</b>	An animal that is hunted and killed by another for food.
<b>Predator</b>	An animal that naturally preys on others.