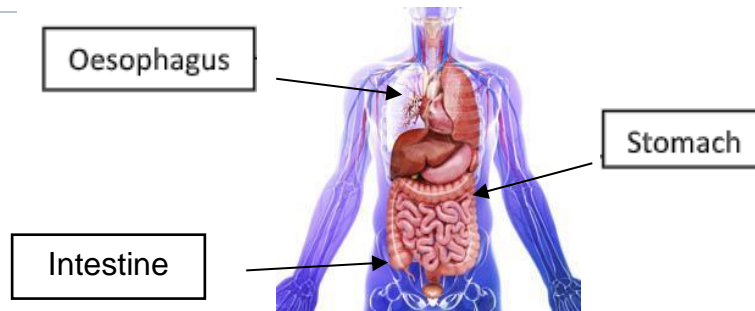


Year 4 Science Knowledge Organiser: Animals including humans

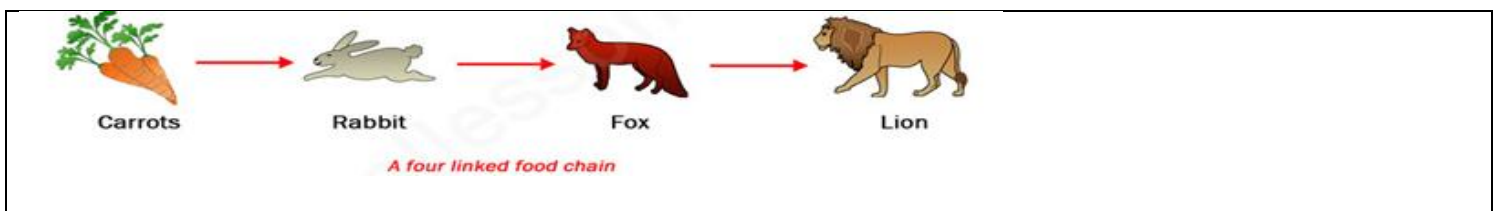
The Digestive System

The group of organs that work together to break down and process food into parts that can be used by the body.



Saliva	A fluid produced in the mouth that contains enzymes that help digest food.
Oesophagus	The tube that carries food from the mouth to the stomach.
Enzyme	A chemical substance that helps reactions to occur in the body.
Intestine	The organs that break down food, absorb nutrients, and through which waste passes on its way out of the body.
Stomach	The organ in which acids and enzymes partially digest food.

Incisors	A narrow-edged tooth at the front of the mouth, adapted for cutting. In humans there are four incisors in each jaw.	<p>A diagram of a human mouth showing the arrangement of teeth. Labels on the right side point to 'Canine' (the pointed tooth), 'Molars' (the large grinding teeth), 'Premolars' (the teeth between canines and molars), and 'Incisors' (the front teeth).</p>
Canines	A pointed tooth between the incisors and premolars of a mammal, often greatly enlarged in carnivores	
Molars	A grinding tooth at the back of a mammal's mouth.	



Food chain	A series of living things each dependent on the next as a source of food.
Producer	The organism that makes/produces its own food.
Prey	An animal that is hunted and killed by another for food.
Predator	An animal that naturally preys on others.